

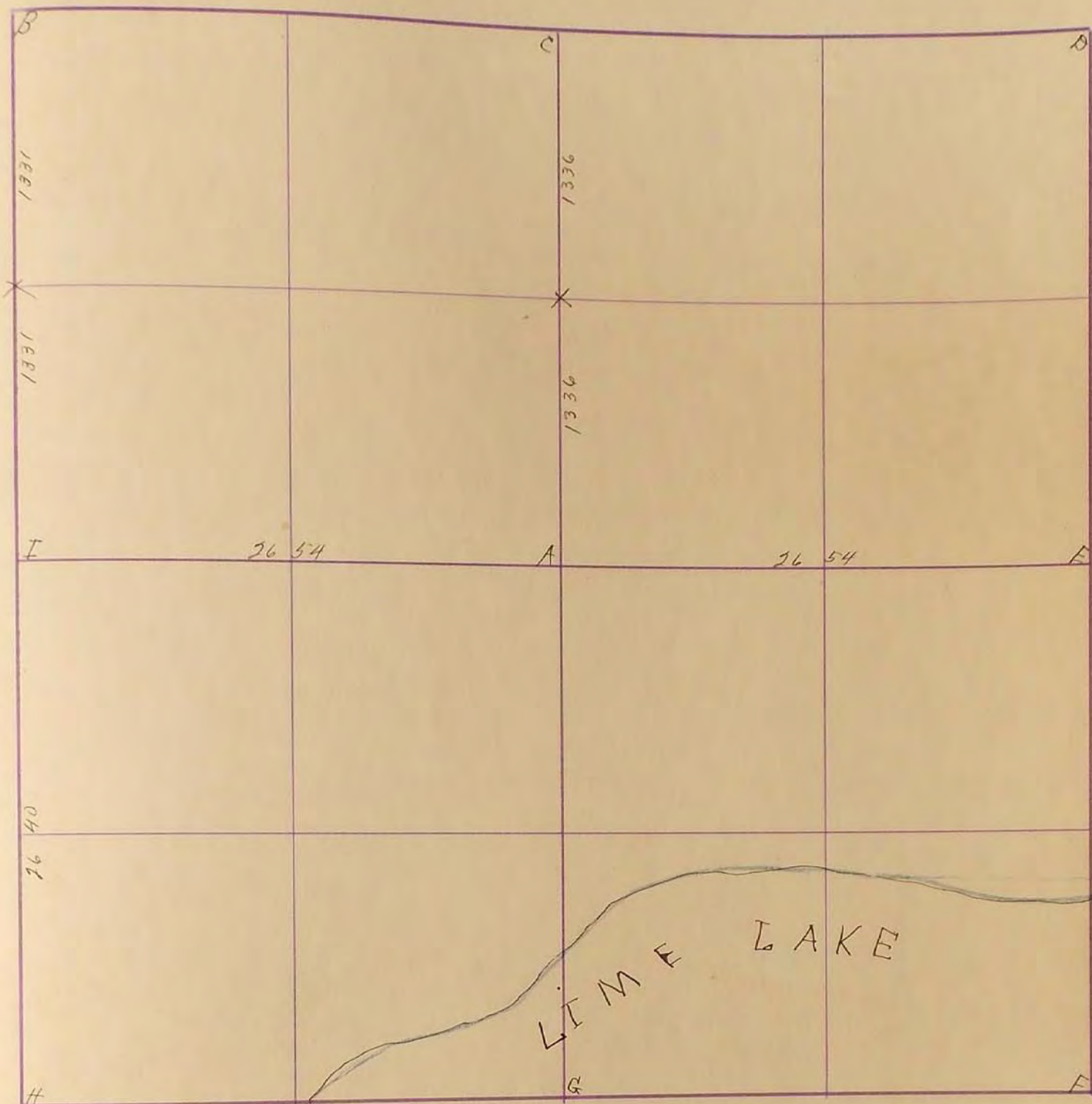
MURRAY COUNTY.

Section 29

Township 106

Range 40

10798 McCall-Warner Co., Blank Book Manufacturers, St. Paul.



Oct. 27 1901

- A. stone 10x10x18 grey
- B. Cor. mound & pits
- C. stone in road grey in line with trees N & S.
about 2 rods south
- D. stone in grade
- E. " " road 10x12x16 grey
- F. in Lake
- G. " lake
- H. fence post 2 ft east of cor
- I. " " in gas. mound
- x stone 8x10x12 grey

J. H. Haseltinecraft

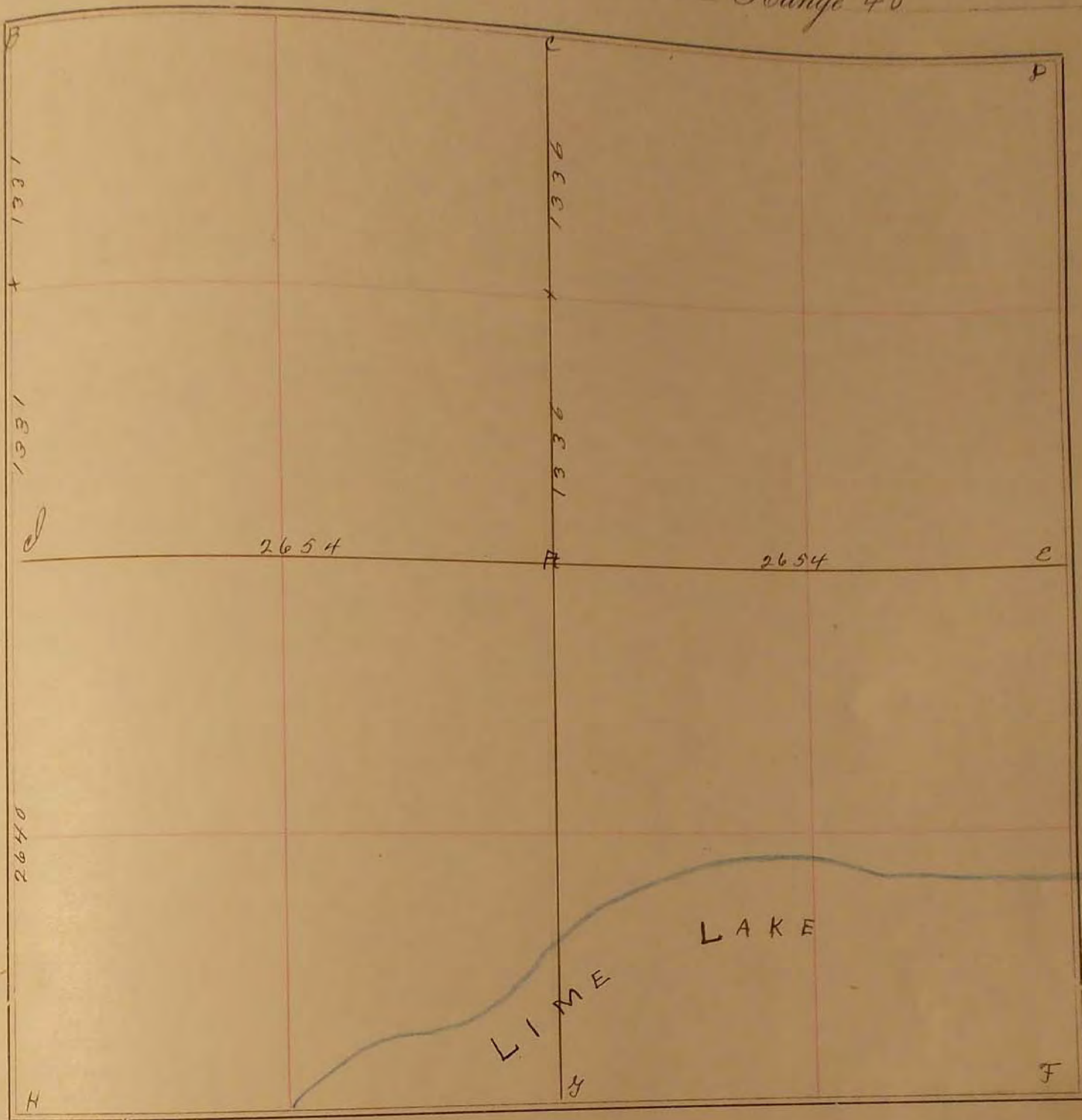
28
29
30
31
32
33
34
35
36

SURVEY No. _____

Section 29

Town 106

Range 40



FIELD NOTES.

Oct. 22, 1901

- A. Stone 10x10x18 (grey)
- B Gov mound + pits
- C Stone in road (grey) inline with trees nts about 2 rods south.
- D Stone in grade
- E " " road 10x12x16 (grey)
- F In lake
- G " "
- H Fence post 276 East of cor
- I " " in Gov. mound
- X Stone 8x10x12 (grey)

J.W. Woolstencroft